

GARDEN NOTES

VERDICUS

When purchased in 2001, this nine acre property was neglected farmland featuring blackberries and gorse but not a single tree.

Having grown up on a farm and since moved on to a career in landscape design, specialising in broad scale country estates, this land has been my chance to create my own garden, largely undisturbed by space restrictions and client needs.

All gardens present with limitations and the opportunity to constantly learn. Here wet, cold, frost laden winters, dry summers and autumns and heavy – if fertile – soils, have directed many planting successes and failures. Certainly, any garden, especially this one, is never finished.

In 2003, working always to the initial Master Plan, dams, terraces, driveway and house sites and basic infrastructure were installed along with the cottage.

The overall design is a fusion of 'picturesque' and formal design using circles to create intimate controlled garden spaces which punctuate the overall park-like atmosphere. To create cohesion throughout these expansive spaces the circular motif has been deconstructed into many guises and reiterated subtly.

Verdicus gardens have been achieved on a 'weekend only' schedule from 2003 to 2016 with structural plantings – for example – avenues, screening, boundary hedges and Birch Groves installed between 2003 and 2008. More intensive gardens such as the Blue Garden, White Borders, Iris axis, Crescent Parterre, Tapestry Garden, Hub Garden, Vegetable Garden and Hot Garden have been developed over the last 10 years and are constantly being refined.

Until December 2017 there was a large hole in the centre of the gardens which was finally plugged with the completion of the main residence and adjacent gardens.

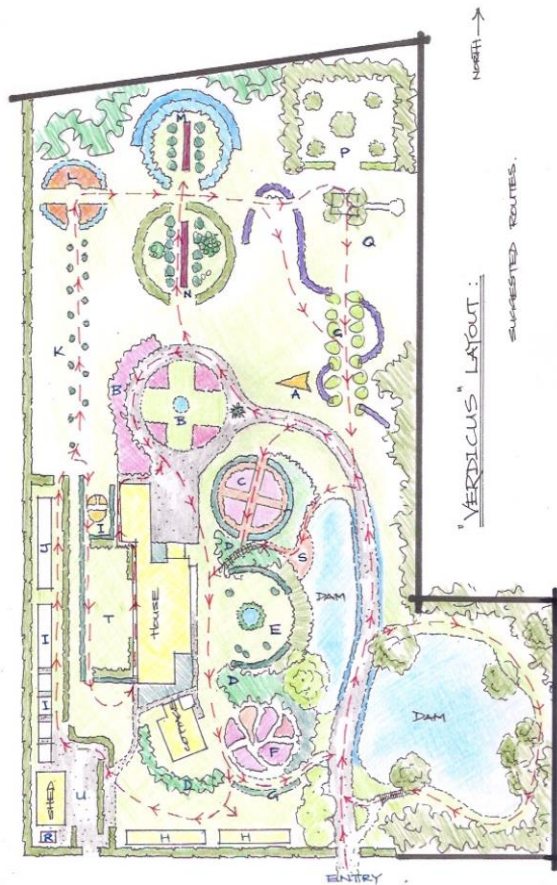
The importance of having always worked from the Master Plan was emphatically reinforced as a house nestles into and yet calmly directs the entire garden design. In fact, house and garden are integral to each other as planned in 2003.

I am well aware that all private gardens are reflective they creators' stories, ambitions and dreams whatever their scale and Verdicus is no exception

Over 20 years, the desire to develop and improve the garden hasn't waned and in retirement we are able to indulge our passion and plans to their full extent.

Please enjoy.

GARDEN NOTES



VERDICUS LAYOUT: LEGEND.

- A. ONSLOW OVL
- B. HUB GARDENS.
- C. TAPESTRY GARDEN.
- D. BIRCH CRENES.
- E. ROUND LAWN.
- F. CRESCENT PARTIERRE
- G. MAPLE WALKS.
- H. WHITE BORDERS.
- I. VEGETABLE GARDENS
- J. "CHOOKS"
- K. OAK LAWN & "ACORNS"
- L. HOT GARDEN
- M. BLUE GARDEN & "EGG"
- N. IRIS AXIS.
- P. NATIVE CORNER
- Q. BOSQUE
- R. GLASSHOUSE
- S. BEACH
- U. WORKS YARD.
- T. MARQUEE / GAMES LAWN

Verdicus is located on the lands of the Dja Dja Wurrung People. Open Gardens Victoria wishes to acknowledge the Traditional custodians of this land and we pay respect to their Elders, past, present and emerging.

These notes can be downloaded from the Open Gardens Victoria website:

www.opengardensvictoria.org.au

